



# GMT MONTHLY MEMBERSHIP PROGRESS REPORT

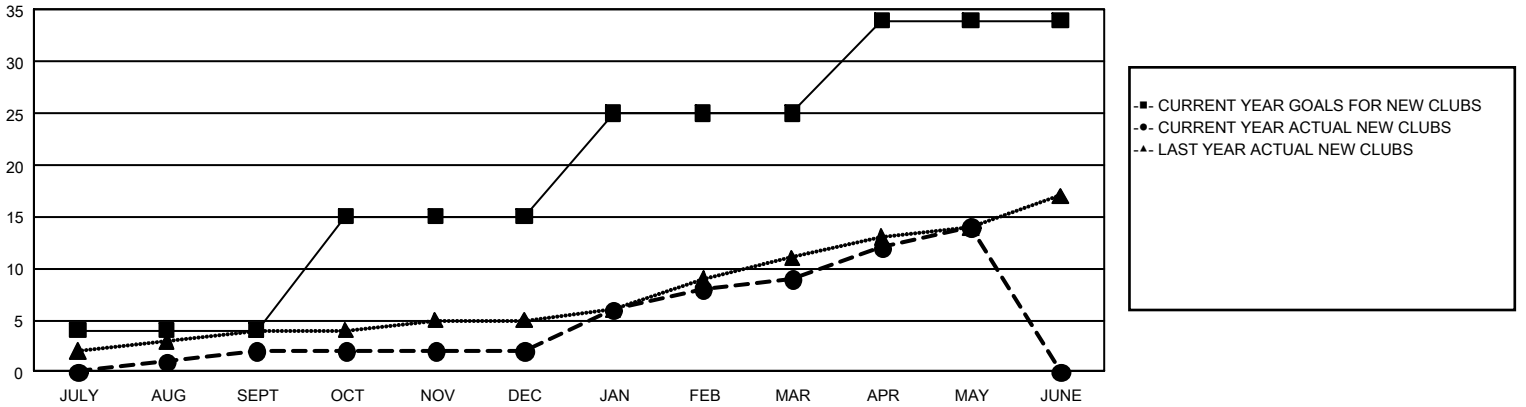
## GAT Constitutional Area 2

Results as of: 5/31/2024

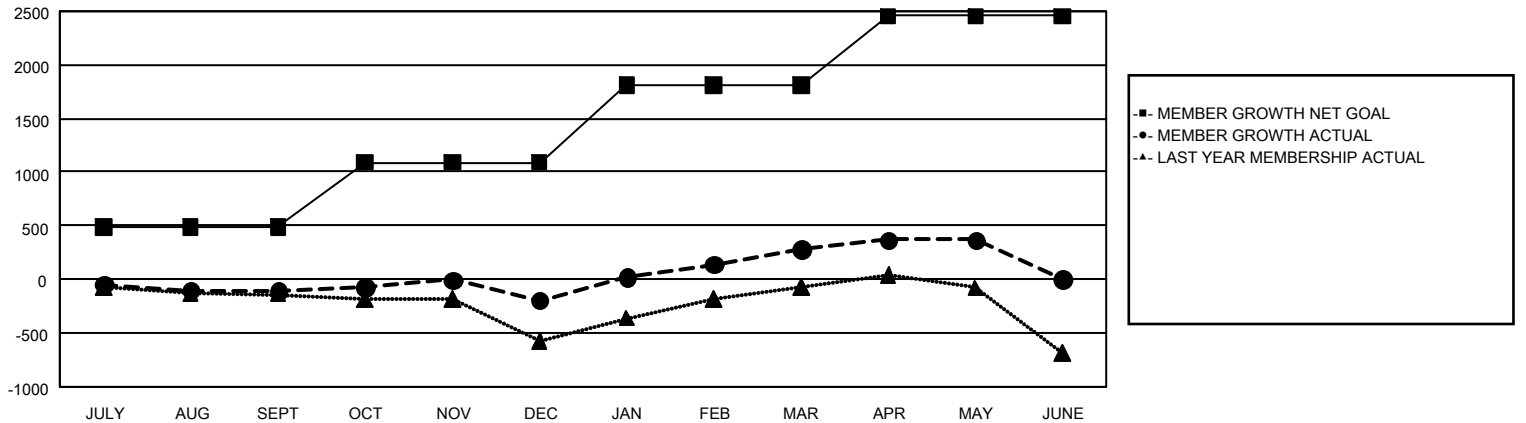
REPORT DOES NOT INCLUDE CLUBS IN UNDISTRICTED AREAS.

Clubs				Members			
RESULTS FOR 2023-2024				RESULTS FOR 2023-2024			
QUARTER	NEW CLUB GOAL	NEW CLUBS	DROPPED CLUBS	QUARTER	MEMBER GROWTH NET GOAL	MEMBER GROWTH ACTUAL	DROPPED MEMBERS ACTUAL (including transfers)
JULY/AUG/SEPT	4	2	3	JULY/AUG/SEPT	483	577	610
OCT/NOV/DEC	11	0	4	OCT/NOV/DEC	609	982	978
JAN/FEB/MAR	10	7	1	JAN/FEB/MAR	718	1,084	528
APR/MAY/JUNE	9	5	8	APR/MAY/JUNE	647	661	530

GOALS AND ACTUAL NEW CLUBS CUMULATIVE



GOALS AND ACTUAL MEMBERS CUMULATIVE



DROPPED CLUBS: 16	765 CLUBS OF 1,189 ADDED 1 OR MORE NEW MEMBERS	<u>GENDER DISTRIBUTION</u>	
<u>DROPPED MEMBERS</u>		MALE	16,650 (63.49%)
DECEASED	358	FEMALE	9,569 (36.49%)
CLUB CANCELLED	40	TOTAL FAMILY UNIT MEMBERS 4,994	
OTHER	2,230		
TOTAL	2,628		
<a href="#">CLICK HERE FOR CUMULATIVE MEMBERSHIP DATA</a>			